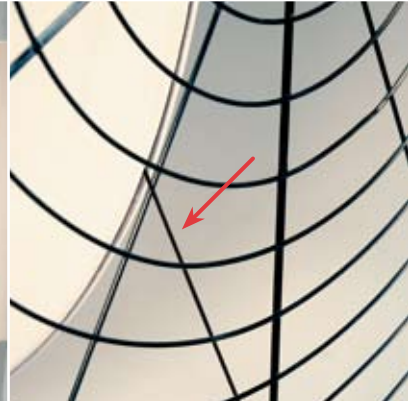
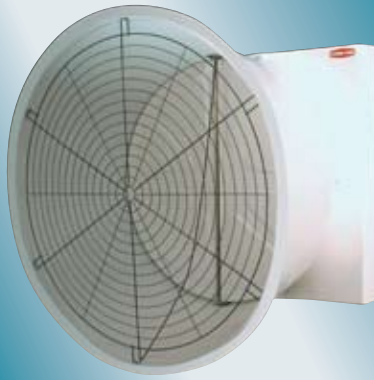


# Total Environmental Control



## TURBO® Fan with HYFLO® Shutter

Black cone and interior housing surface also available.

Cable attachment allows HYFLO® Doors to float left or right together for maximum efficiency.

Chore-Time's high-capacity 52-inch (132.1-cm) diameter TURBO® Fan with HYFLO® Shutter delivers more air with fewer fans – 29,700 CFM at 0.05 inches of static pressure in independent wind tunnel tests.

### HYFLO® SHUTTER

Chore-Time's HYFLO® Shutter minimizes obstructions during fan operation and seals tighter when not operating.

### MORE AIR-TIGHT SEAL

Delivers up to 10% more air with 75% less opportunity for air to leak through compared to a traditional louver shutter.

### LONG-TERM EFFICIENCY

HYFLO Doors do not suffer the 12-15% loss of efficiency and air speed typical of dirty louver-style shutters, so air speed is maintained over time.

### OTHER TURBO FAN WITH HYFLO® SHUTTER FEATURES

- Available in 52-inch (132.1-cm) diameter only.
- Sturdy, corrosion-resistant fiberglass housing with cast aluminum blade

and corrosion-resistant components.

- One-piece, impact-resistant, polyethylene cone has 64-inch (162.6-cm) outside diameter, but can be compressed for 60-inch-on-center (152.4-cm) installation.
- Automatic belt tensioner uses arm and pulley arrangement to provide consistent belt tension.
- Heavy-duty, cast iron, air-handler type bearings are self-aligning, pre-lubricated, and include a zerk fitting, as well as being shielded from moisture and dust.
- Fans are shipped fully assembled including shutter doors. At installation, simply attach fan to house sidewall, add one-piece cone, and snap grill in place. Unit installs flush on inside of house.
- Backed by Chore-Time's generous extended warranty including limited lifetime coverage for housing and blade, and a bonus year on motors.\*
- The HYFLO Shutter consists of only two moving parts for greater reliability and easier cleaning.

## TURBO® Fans with Aerodynamic Curved Frame Louver Shutters

Chore-Time's TURBO® Cone Fan provides high efficiency and corrosion resistance.

### TURBO® FAN FEATURES

- Available in 48-, 36-, 24-, 18- or 14-inch (121.9-, 91.4, 61.0-, 45.7- or 35.6-cm) diameters.
- Corrosion-resistant, reinforced-fiberglass housing with aluminum motor mounts and a heavy cast-aluminum blade.
- Backed by Chore-Time's generous extended warranty including limited lifetime coverage for housing and blade, and a bonus year on motors.\*
- High CFM and CFM/watt, even under high static pressure.
- Heavy-duty, cast iron,



One-piece cone improves air flow up to 14% and efficiency up to 21%.

- air-handler type bearings are self-aligning, pre-lubricated, and include a zerk fitting, as well as being shielded from moisture and dust.
- Grill simply snaps into impact-resistant, polyethylene, one-piece cone with no fasteners required.



\*See Chore-Time full written warranty for complete warranty details.

## Chore-Tronics® 2 Controls

### CONTROL FEATURES

- Control all house ventilation components.
- Simple, precise operation with a variety of management tools including user-defined programs and a wide range of history subjects.
- Easily expandable – choose 32, 40 or 56 outputs, or add even more, up to 80. Includes 20 inputs – add up to 28 more.
- Easy-to-read text in English or Spanish with a large screen for less scrolling.
- Quick screen access and simple navigation.
- Built-in peripherals including static pressure sensor.
- PC-compatible using C-Central™ Software for control, monitoring and analysis – get the data you need to make operational improvements.



## Space Heaters

### DURA-THERM™ 250 SPACE HEATER FEATURES

- 250,000 BTU output heats 2750 to 4400 square feet (255.5-408.8 m<sup>2</sup>). Certified for U.S. use only.
- A Canadian certified unit is also available with choice of 225,000 BTU (LP) or 200,000 BTU (natural gas) output.
- Outside mount kit permits unit to be mounted outside the house – draws more fresh air, uses less space in house and adds less in-house humidity.
- An air deflector is available to direct air along walls instead of blowing directly on birds.
- Durable, galvanized steel cabinet with stainless steel option and heat-resistant aluminized burn chamber.
- High-performance cast-iron burner provides efficient combustion.
- Multiple ignition and fuel source options.
- Designed for easy cleaning and maintenance.



## Efficient TURBO-COOL™ Evaporative Cooling

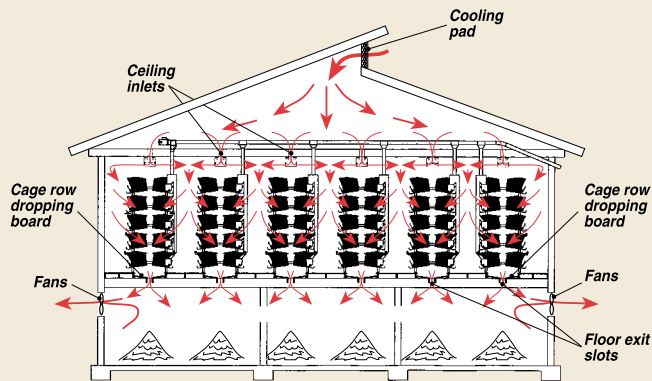
Chore-Time's TURBO-COOL™ Evaporative Cooling System is self-contained and efficient. Why just cool your house when you can "TURBO-COOL" it?

### TURBO-COOL™ SYSTEM FEATURES

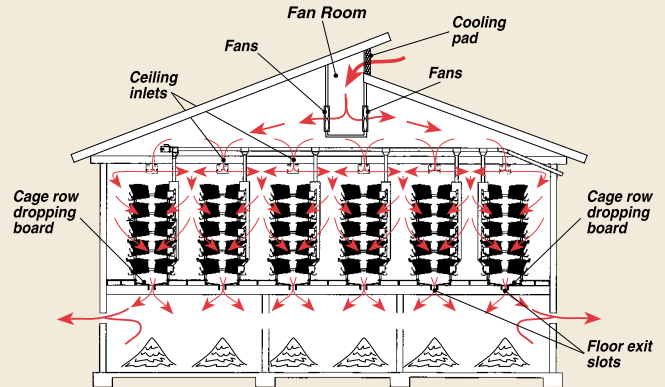
- One-piece trough is made of heavy-duty, ultraviolet-resistant polypropylene and has no problematic joints where leaks and breaks tend to occur in others' systems.
- Fabric-reinforced trough material is proven under the harshest conditions and provides self-contained water storage.
- Two-inch (5-cm) water distribution pipe with large 5/32-inch (4-mm) holes provides better water distribution from end to end and hole to hole.
- Uniform water distribution up to 75 feet (23 m), or 110 feet (33.5 m) with a center-mounted sump.
- High-performance pad comes standard in 12-inch (30-cm) widths and various pad heights.
- System includes a heavy-duty submersible pump with a cast-iron housing, upper and lower bearings, and 230-volt operation.
- Well-designed, innovative sump tank includes reinforcing ribs for greater strength and durability, and a drain plug for seasonal service.
- Reliable automatic float valve matches water supply to demand and helps maintain consistent pad wetting.



# TURBO HOUSE® Environmental System



Negative Pressure System



Positive Pressure System

## TURBO HOUSE® System – A Proven Profit Producer

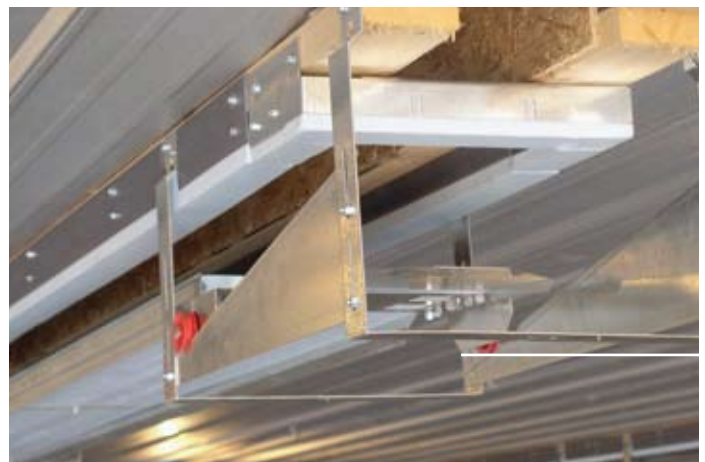
Chore-Time's TURBO HOUSE® Environmental System provides fresh, sparkling clean, uniform air in all areas of the layer house. This ideal kind of environment brings about many benefits such as:

- Uniform temperature in all parts of the cage building.
- Less ammonia and odors.
- Lower mortality and consistently better production.
- Drier manure (13 to 20% moisture content).
- Less time required for manure removal.
- An environmentally acceptable system.

### HERE'S HOW IT WORKS

- Air enters the house through the roof's peak or the house eaves.

- In a negative pressure house, the air is drawn through the house by fans located in the pit area. Fans are located in the attic in a positive pressure house.
- TURBO™ Inlets running the length of the cage rows deliver controlled streams of fresh air in two directions.
- Fresh, clean air is provided evenly to all birds throughout the house, for an unsurpassed and uniform environment.
- Spent air is forced through slots in the floor, across cone-shaped manure piles in the pit, enabling further manure drying.
- To complete the TURBO HOUSE System, one large dropping board scraper is positioned directly under each cage row.



TURBO™ Inlets (above) running the entire length of cage rows provide a controlled stream of fresh air in two directions as part of the TURBO HOUSE® System.

## Chore-Time Air Inlets

### INLET FEATURES

- Galvanized steel inlets (below) are easy to use with patented "flip-up" brackets to accept winch cable.
- One-inch (25-mm) foam insulation repels insects and minimizes condensation.
- Stainless steel hinges and rigid, lock-formed frame provide smooth closure.
- No welds or other easy targets for rust.
- Choice of 7 or 12 inches (18 or 30 cm) high in various widths.



# FAN SPECIFICATIONS - Fiberglass Cone Fans



## SPECIFICATIONS – TURBO® FAN WITH HYFLO® SHUTTER

Drive	Type	Fan P/N	.00 Static Pressure		.05 Static Pressure		.10 Static Pressure		Air Flow Ratio	Bess Labs Test Number
			CFM	CFM/Watt	CFM	CFM/Watt	CFM	CFM/Watt		
<b>52-Inch (132.1-cm) Fans with HYFLO® Shutter (1 Phase)</b>										
BD	Standard	49740-22	28,700	26.4	27,000	23.5	24,900	20.8	0.73	04334
BD	High-Capacity	49740-21	30,700	21.8	29,700	20.5	27,700	18.3	0.79	04312
<b>52-Inch (132.1-cm) Fans with HYFLO® Shutter (3 Phase)</b>										
BD	Standard	49740-42	28,800	26.3	27,100	23.3	24,800	20.5	0.73	04335
BD	High-Capacity	49740-41	N/A	N/A	29,700	20.3	27,900	18.2	0.79	04318
<b>SPECIFICATIONS – TURBO® FAN WITH LOUVER SHUTTER</b>										
Drive	Type	Fan P/N	.00 Static Pressure		.05 Static Pressure		.10 Static Pressure		Air Flow Ratio	Bess Labs Test Number
			CFM	CFM/Watt	CFM	CFM/Watt	CFM	CFM/Watt		
<b>48-Inch (121.9-cm) Fans with Bell Louver Shutter</b>										
BD	48-Inch Standard	38264-4825	25,200	23.9	23,600	21.2	22,100	19.0	0.74	04332
BD	48-Inch High-Cap.	47898-4825	27,700	19.6	26,400	18.0	24,960	16.3	0.83	02473
<b>36-Inch (91.4-cm) Fans with Flat Louver Shutter</b>										
DD	36-Inch (91.4-cm)	38265-3622	11,710	20.5	10,970	18.6	10,200	16.8	0.73	96159
BD	36-Inch (91.4-cm)	38589-3622	12,640	20.8	11,960	19.0	11,190	17.0	0.79	96199
<b>Variable Speed Fans with Flat Louver Shutter</b>										
DD	24-Inch (61.0-cm)	40452-2422	6,400	17.8	5,990	16.2	5,550	15.0	0.73	98012
DD	18-Inch (45.7-cm)	40452-1822	4,180	15.2	4,014	14.1	3,870	13.0	0.87	98008
DD	14-Inch (35.6-cm)	40452-1422	2,120	14.8	2,030	13.8	1,910	12.6	0.78	98059

## Design and Backing

Chore-Time's years of service to the egg production industry demonstrate our dedication to developing leading products to help egg producers around the world. We are committed to designing, testing, and

proving our equipment in the field before we offer it to you. You can have PEACE OF MIND™ with Chore-Time's ventilation systems.

*Wind Tunnel Tested*



EGG PRODUCTION SYSTEMS  
CHORE-TIME BROCK INTERNATIONAL  
Divisions of CTB, Inc.

Phone 574.658.4101 or  
+1.574.658.9323 (International)  
Internet: [www.choretimeegg.com](http://www.choretimeegg.com)  
or [www.ctbworld.com](http://www.ctbworld.com)  
E-Mail: [egg@choretime.com](mailto:egg@choretime.com)